

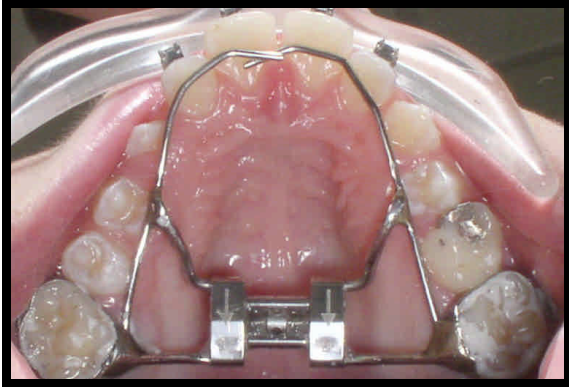
Appliances



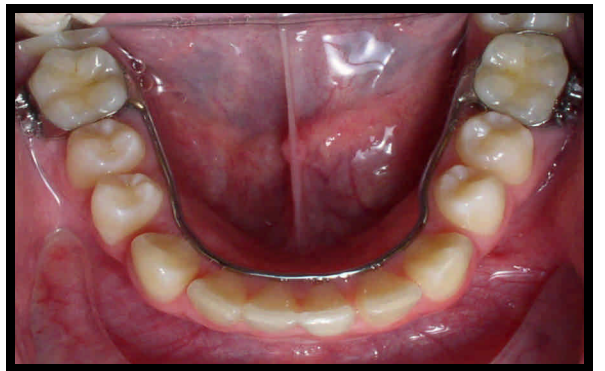
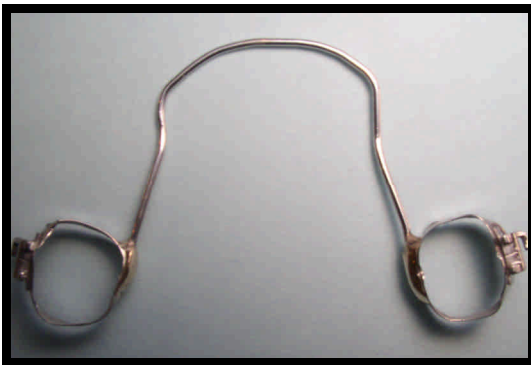
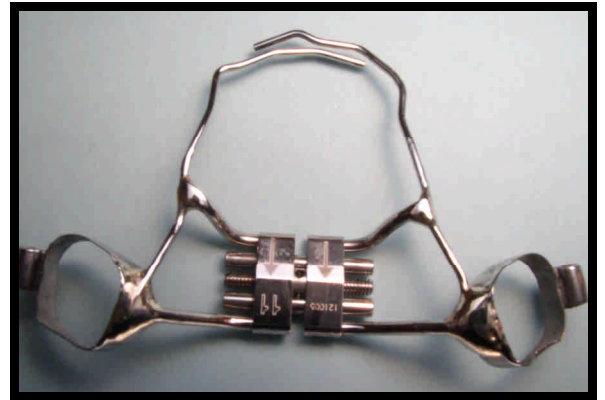
Decalcification- If the teeth are not kept clean they develop these white spots. The only way to solve this problem is to whiten teeth so that the spots will blend better.



Separators- We put elastic rings between the molars in the back to make room for the metal rings (bands) we will be fitting on the upper and lower. May feel sore next day.



Rapid Palatal Expander (RPE) – Used to expand the arch by using a key to turn it in the middle. Most patients don't experience soreness, but it takes 1-2 weeks to get use to eating, swallowing, and talking.



Lower Lingual Holding Arch (LLHA) - Used to maintain space in the lower arch and prevent front teeth from tipping back. Most patients don't experience soreness from this appliance.